

Egress Requirements
 Exit Width Factors
 Flat: 0.2' per person
 Stepped: 0.3' per person

Maximum Exit Access Travel Distance
 I-2: 200'
 A-2, S-1: 250'
 B: 300'

Maximum Common Path of Travel
 I-2, A-2: 75'
 S-1, B: 100'

Maximum Occupant Load with a Single Exit
 I-2: 10 Occupants
 A-2, B: 49 Occupants
 S-1: 29 Occupants

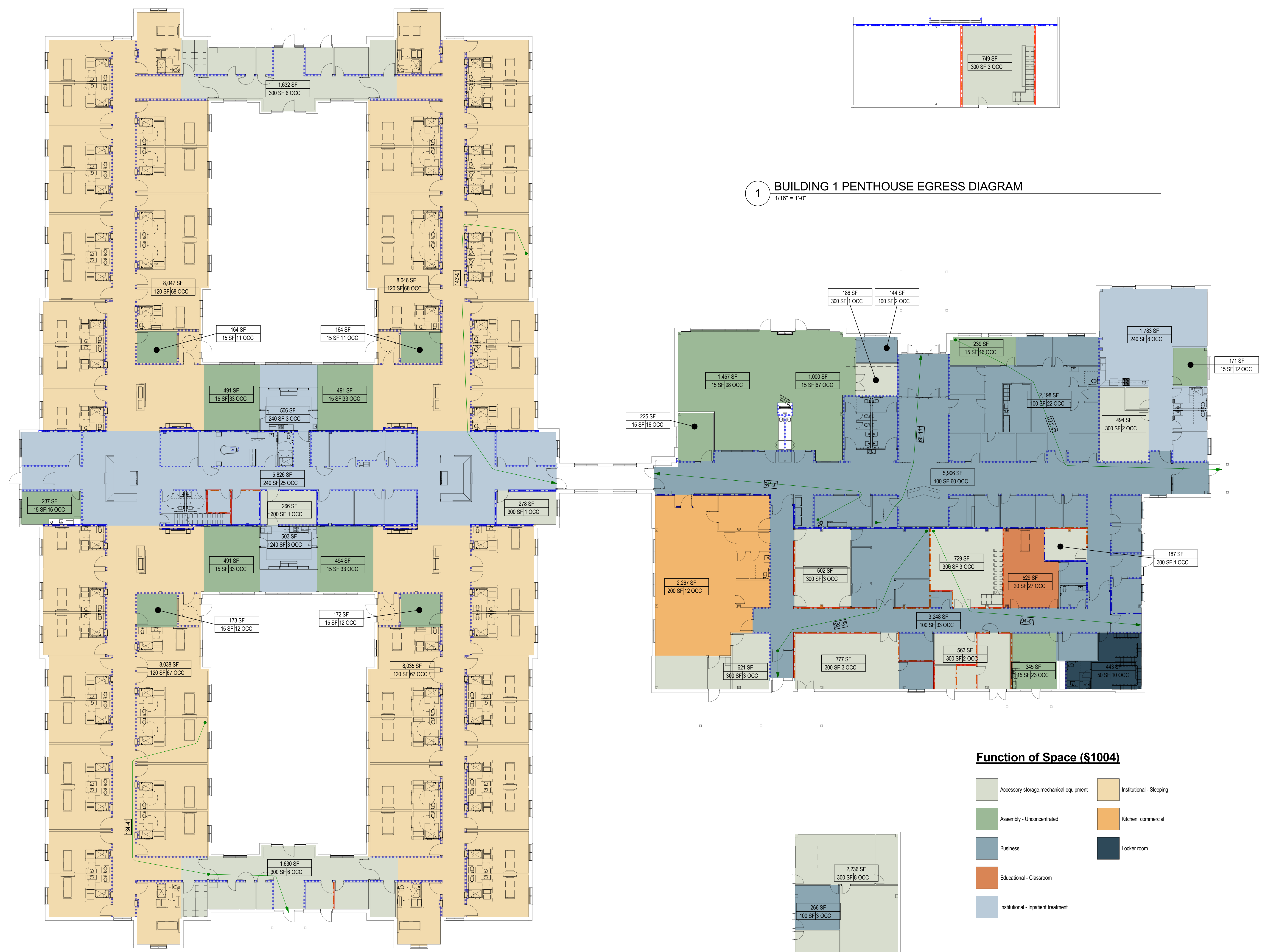
OCCUPANT LOAD			
FUNCTION OF SPACE	AREA	AREA/OCC	OCCUPANTS

Building 1			
Accessory storage, mechanical, equipment	4,906 SF	300 SF	21
Assembly - Unconcentrated	3,438 SF	15 SF	260
Business	11,495 SF	100 SF	117
Educational - Classroom	529 SF	20 SF	27
Institutional - inpatient treatment	1,783 SF	240 SF	8
Kitchen, commercial	2,267 SF	200 SF	12
Locker room	443 SF	50 SF	10
Building 1	24,863 SF		455

Building 2			
Accessory storage, mechanical, equipment	3,806 SF	300 SF	25
Assembly - Unconcentrated	2,878 SF	15 SF	194
Institutional - inpatient treatment	6,835 SF	240 SF	31
Institutional - Sleeping	32,166 SF	120 SF	270
Building 2	45,685 SF		520

Building 4			
Accessory storage, mechanical, equipment	2,236 SF	300 SF	8
Business	266 SF	100 SF	3
Building 4	2,502 SF		11

1 BUILDING 1 PENTHOUSE EGRESS DIAGRAM
 1/16" = 1'-0"



Function of Space (\$1004)

- Accessory storage, mechanical, equipment
- Institutional - Sleeping
- Assembly - Unconcentrated
- Institutional - Inpatient treatment
- Business
- Educational - Classroom
- Kitchen, commercial
- Locker room

EGRESS LEGEND

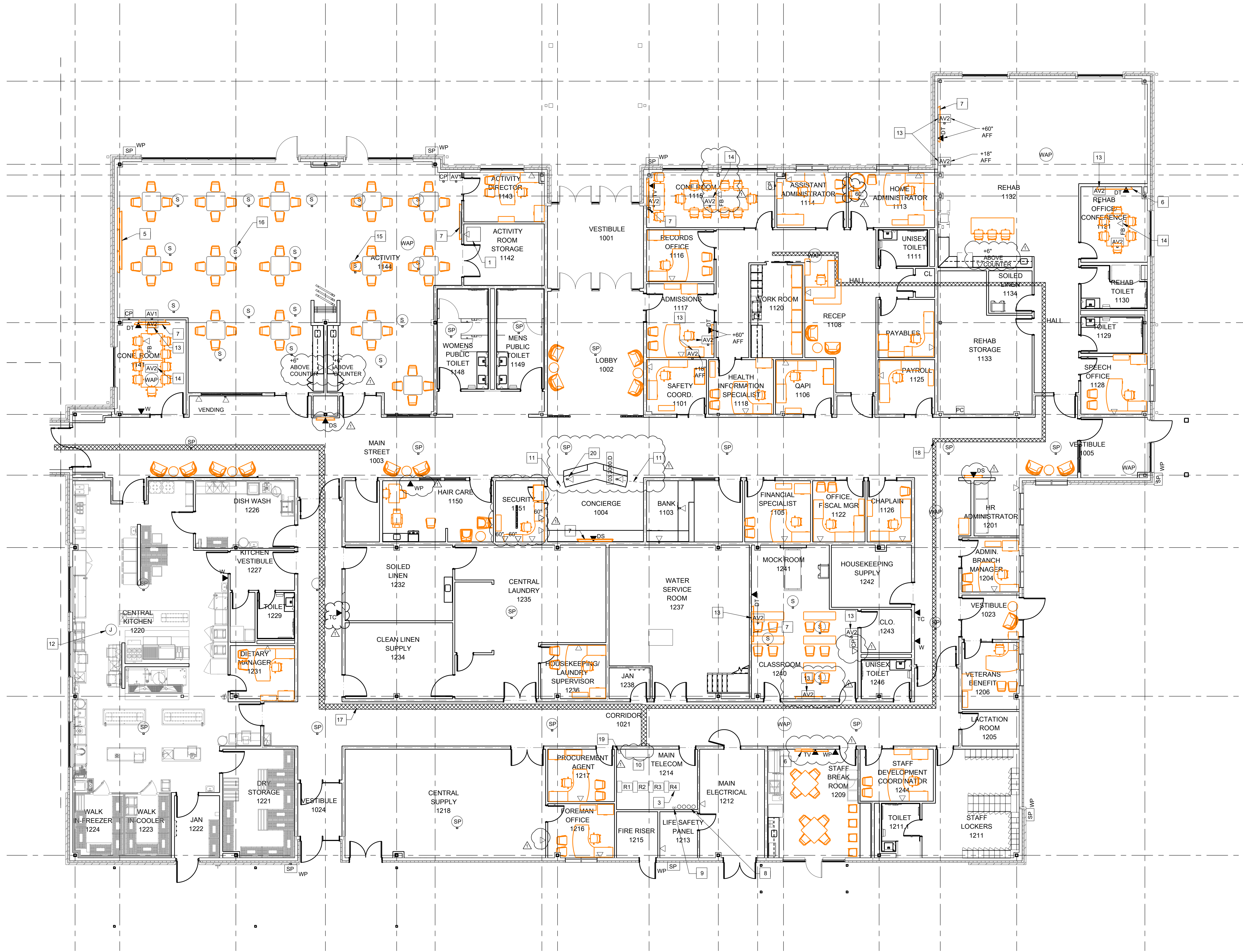
- OCCUPANT LOAD TAG
- AREA OF SPACE
- NUMBER OF OCCUPANTS
- AREA PER OCCUPANT
- SMOKE PARTITION
- 1 HOUR RATED FIRE BARRIER
- 1 HOUR RATED SMOKE BARRIER
- TRAVEL DISTANCE

2 FIRST FLOOR EGRESS DIAGRAM
 1/16" = 1'-0"

DRAWING INFORMATION		BOWLING GREEN VETERANS CENTER		DRAWING NO.	
AME FILE NO.	2021_004	ACCOUNT NO.		G-102	
DRAWING DATE	09/10/2021				
DRAWN BY	Author	COMMONWEALTH OF KENTUCKY FINANCE AND ADMINISTRATION CABINET DEPARTMENT FOR FACILITIES AND SUPPORT SERVICES DIVISION OF ENGINEERING AND CONTRACT ADMINISTRATION FRANKFORT, KENTUCKY		AS BUILT DATE	
CHECKED BY	Checker			DECA LOG #	
PHASE	B				
RTA DATE	B				
		2605 Harrodsburg Rd., Lexington, KY 40504 (859) 224-1361 www.owp.com			
		REVISION HISTORY OF THIS DRAWING			
		DESCRIPTION OF REVISIONS	DATE	DESCRIPTION OF REVISION	DATE

9/10/2021 9:14:47 AM orcutt|winslow / 2021_004 / BOWLING GREEN VETERANS CENTER - B / G-102- CODE SUMMARY / Author
 BIM 360://2021_004 (Bowling Green Veterans Center)/2021_004_BGV_C_V21.rvt

- KEYED NOTES:**
- AV RACK WITH CASTERS. PROVIDE 1 - DEDICATED 120V QUAD OUTLET AND 12" X 12" AV BOX WITH 3 - 1/4" CONDUIT STUBS.
 - 4 - 4" UNDERGROUND CONDUITS, (SEE SITE PLAN) FOR INCOMING DATA CARRIER SERVICES.
 - MAIN DATA ROOM
 - 2 POST RACKS WITH 8" VERTICAL CABLE MANAGEMENT. R1 FOR INCOMING SERVICES. R2 AND R3 FOR NETWORK SWITCHES AND PATCH PANELS. R4 FOR PAGING, TV DISTRIBUTION, VIDEO SURVEILLANCE AND OTHER TECHNOLOGY SYSTEMS. PROVIDE 1 - DEDICATED QUAD 120V CIRCUIT FOR EACH DATA RACK.
 - 3x3 VIDEOWALL WALL MOUNTED. PROVIDE 3 - DEDICATED QUAD 120V CIRCUITS BEHIND VIDEO WALL. PROVIDE 3 - AV ROUGH-IN BOXED 4 1/16" BOXES WITH 1 1/4" CONDUIT STUB FOR EACH.
 - 85" LCD DISPLAY WALL MOUNTED. PROVIDE 1 QUAD 120V OUTLET AND CHIEF PAC525 WALL MOUNT STORAGE BOX BEHIND EACH WALL MOUNT DISPLAY.
 - 65" LCD DISPLAY WALL MOUNTED. PROVIDE 1 QUAD 120V OUTLET AND CHIEF PAC525 WALL MOUNT STORAGE BOX BEHIND EACH WALL MOUNT DISPLAY.
 - 2 DIVERSE PATHWAYS INTO SITE. 2 CARRIERS IF POSSIBLE. PROVIDE 12" VERTICAL FIBER OPTIC PREFERRED. COT WILL PROVIDE RECOMMENDATIONS. SEE RISER DIAGRAM FOR ADDITIONAL DETAILS.
 - 2 - 4" CONDUITS FOR CONNECTION TO OUT BUILDING CONDUITS RESERVED FOR SECURITY AND COMMUNICATIONS CABLING.
 - SPACE RESERVED FOR ACCESS CONTROL AND ELECTRIC LOCK POWER SUPPLY PANELS.
 - 1" CONDUIT STUBBED INTO FURNITURE AND UP WALL INTO ACCESSIBLE CEILING FOR DATA AND SECURITY CABLING AT DESK.
 - CEILING MOUNTED FLASHING LIGHT AND SOUNDER. INTERFACE WITH IP PHONE SYSTEM TO BE ACTIVATED WHEN A CALL IS RECEIVED AT THE WALL PHONE IN THE KITCHEN.
 - PROVIDE HDMI CABLE BETWEEN BOTH AV2 BOXES. PROVIDE WALL PLATES WITH HDMI CONNECTORS. PROVIDE HDMI CABLE TO CONNECT WALLPLATE BEHIND DISPLAY. PROVIDE 12" HDMI CABLE FOR CONNECTION TO WALLPLATE FOR COMPUTER OR LAPTOP CONNECTION.
 - PROVIDE 2 SECTION FLOORBOX FOR AV AND DATA OUTLETS. ROUTE 1" CONDUIT TO AV2 BOX BEHIND DISPLAY. ROUTE 1" CONDUIT UP WALL TO ACCESSIBLE CEILING FOR DATA CABLING.
 - SPEAKERS ON NORTH SIDE OF ROOM. NORTH OF MOVABLE PARTITION TO BE ON ONE SPEAKER CIRCUIT.
 - SPEAKERS ON SOUTH SIDE OF ROOM. SOUTH OF MOVABLE WALL TO BE ON ONE SPEAKER ZONE TO ALLOW NORTH AND PORTION OF ROOM TO BE UTILIZED INDEPENDENTLY OF EACH OTHER OR COMBINED WHEN WALL IS OPEN.
 - 12"x4" BASKET TRAY FOR COMMUNICATIONS CABLING AND BACKBONE CABLING ONLY.
 - 8"x4" BASKET TRAY FOR COMMUNICATIONS CABLING AND BACKBONE CABLING ONLY.
 - 4" CONDUIT THROUGH ROOF WITH WEATHERHEAD AT ROOF FOR SATELLITE TELEVISION SIGNAL.
 - VIDEO INTERCOM MASTER STATION. SYSTEM SHALL HAVE THE CAPABILITY TO INTEGRATE WITH OWNERS IP PHONE SYSTEM AND PROVIDE AN APP FOR WINDOWS COMPUTERS OR MOBILE DEVICES TO REMOTELY ANSWER CALLS AND RELEASE ASSOCIATED DOOR.



DATA AND COMMUNICATIONS SYSTEMS - COMMUNITY CENTER

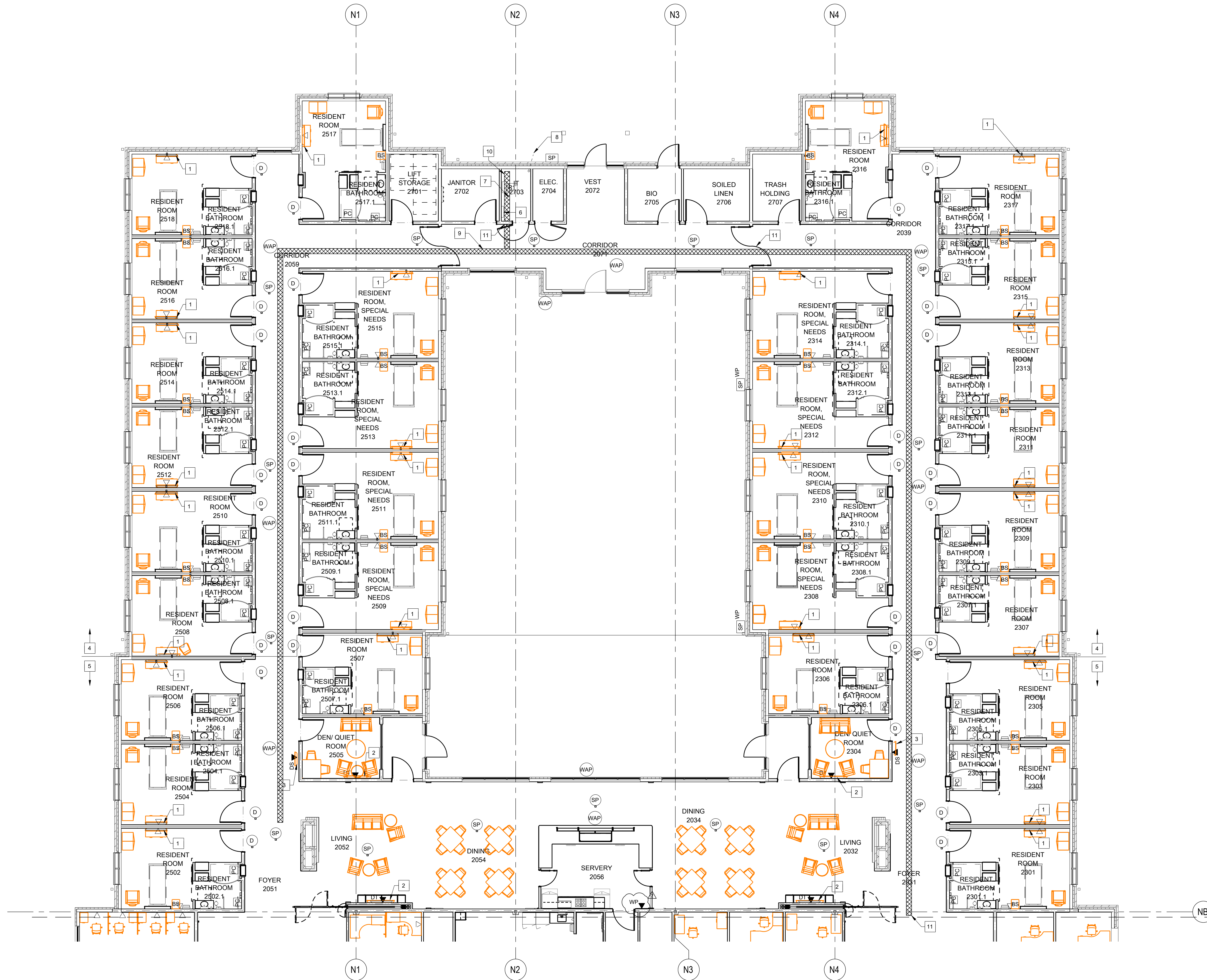
0 8' 16' 24'

1/8" = 1'-0"

DRAWING INFORMATION		BOWLING GREEN VETERANS CENTER	
AGE FILE NO.	CDG project no.	DATA COMMUNICATIONS FLOOR PLAN	
DRAWING DATE	2/22/22	ACCOUNT NO.	COMMONWEALTH OF KENTUCKY FINANCE AND ADMINISTRATION CABINET DEPARTMENT FOR FACILITIES AND SUPPORT SERVICES DIVISION OF ENGINEERING AND CONTRACT ADMINISTRATION FRANKFORT, KENTUCKY
DRAWN BY	Author	DATE	T1101
CHECKED BY	Checker	AS BUILT DATE	
PHASE	In Progress	DECA LOG #	
RTA DATE			
<p>2405 Herndonburg Rd., Lexington, KY 40504 (606) 224-1301 Fax (606) 224-1301</p> <p>2029 N. Central Ave., Louisville, KY 40212 (502) 582-1100 Fax (502) 582-1100</p>			
REVISION HISTORY OF THIS DRAWING			
DATE	DESCRIPTION OF REVISIONS	DATE	DESCRIPTION OF REVISION
1	ASB SR	9/20/2024	



2/15/2022 2:01:47 PM orcutt|winslow / CDG project no. / BOWLING GREEN VETERANS CENTER - In Progress / T1101- DATA COMMUNICATIONS FLOOR PLAN / Author
 BIM 360//2021_004 (Bowling Green Veterans Center)/2004-ELEC-Bowling Green Veterans Center-CENTRAL_V21.rvt

- KEYED NOTES:**
- 30" LCD DISPLAY, TYPICAL FOR EACH RESIDENT ROOM SET ON TOP OF FURNITURE.
 - 86" LCD DISPLAY. SEE TYPE WALL MOUNT DETAIL. PROVIDE 1 QUAD 120V OUTLET AND CHIEF PAC525 WALL MOUNT STORAGE BOX BEHIND EACH WALL MOUNT DISPLAY.
 - 6" DISPLAY WALL MOUNTED IN PORTRAIT ORIENTATION.
 - COMMUNICATION CABLES ABOVE THE LINE ROUTE TO IT ROOM 2703.
 - COMMUNICATION CABLES BELOW THE LINE ROUTE TO IT ROOM 2109.
 - SPACE RESERVED FOR SECURITY PANELS AND NURSE CALL SYSTEM PANELS.
 - PROVIDE 1 DEDICATED 120V QUAD OUTLET FOR DATA RACK AND 1 DEDICATED 120V CIRCUIT TO A J BOX FOR ACCESS CONTROL/LOCK POWER SUPPLIES.
 - 3" UG CONDUIT FROM IT ROOM TO LIGHT POLE FOR SURVEILLANCE CAMERAS. SEE CIVIL PLAN FOR CONDUIT ROUTING.
 - 12"X4" BASKET CABLE TRAY FOR COMMUNICATIONS AND BACKBONE CABLING ONLY.
 - 12" WIDE LADDER RACK ABOVE COMMUNICATION RACK.
 - PROVIDE FIRE STOP MODULES AT RATED WALLS FOR ALL TECHNOLOGY CABLING. ALLOW FOR 30% GROWTH SPARE CAPACITY. STI E2PATH OR HILTI SPEEDPATH ARE ACCEPTABLE MANUFACTURERS.



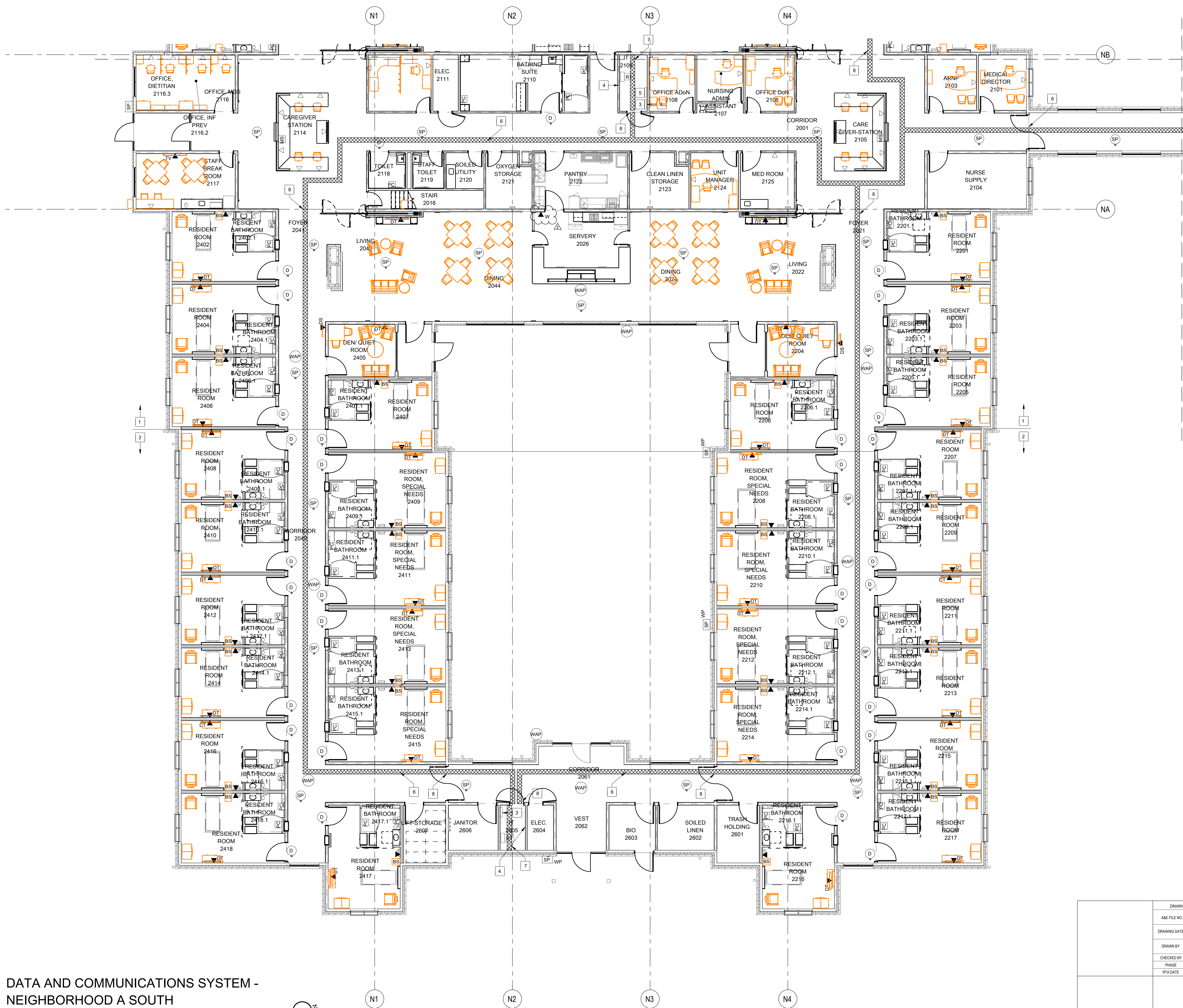
DATA AND COMMUNICATIONS SYSTEM - NEIGHBORHOOD A NORTH



DRAWING INFORMATION		BOWLING GREEN VETERANS CENTER		DRAWING NO.
AME FILE NO.	CDG project no.	DATA COMMUNICATIONS FLOOR PLAN		T1102
DRAWING DATE	08/20/21	ACCOUNT NO.	COMMONWEALTH OF KENTUCKY FINANCE AND ADMINISTRATION CABINET DEPARTMENT FOR FACILITIES AND SUPPORT SERVICES DIVISION OF ENGINEERING AND CONTRACT ADMINISTRATION FRANKFORT, KENTUCKY	AS BUILT DATE
DRAWN BY	Author	 		DECA LOG #
CHECKED BY	Checker	<small>2405 Herndonburg Rd. Lexington, KY 40504 (859) 224-1351 www.orcutt-winslow.com</small>		
PHASE	In Progress	<small>2029 N. Central Ave., 6th Floor, Phoenix, AZ 85012 mail@orcw.com 602.257.1766 www.orcw.com</small>		
RTA DATE		REVISION HISTORY OF THIS DRAWING		
		DATE	DESCRIPTION OF REVISION	DATE
1	ADDENDUM #1	3/1/2022		
2	ASB JR	5/20/2024		

2/15/2022 2:02:10 PM orcutt|winslow / CDG project no. / BOWLING GREEN VETERANS CENTER - In Progress / T1102- DATA COMMUNICATIONS FLOOR PLAN / Author
 BIM 360//2021_004 (Bowling Green Veterans Center)/2004-ELEC-Bowling Green Veterans Center-CENTRAL_V21.rvt



2/15/2022 2:02:39 PM orcutt | winslow / CAG project no. / BOWLING GREEN VETERANS CENTER - In Progress / T1103- DATA COMMUNICATIONS FLOOR PLAN / Author
 BIM 360/7/2021_004 (Bowling Green Veterans Center)/2004-ELEC-Bowling Green Veterans Center-CENTRAL_V21.rvt



- KEYED NOTES:**
- COMMUNICATION CABLES ABOVE THE LINE ROUTE TO IT ROOM 2109.
 - COMMUNICATION CABLES BELOW THE LINE ROUTE TO IT ROOM 2605.
 - SPACE RESERVED FOR SECURITY PANELS AND NURSE CALL SYSTEM PANELS.
 - PROVIDE 1 DEDICATED 120V QUAD OUTLET FOR DATA RACK AND 1 DEDICATED 120V CIRCUIT TO A J BOX FOR ACCESS CONTROL/LOCK POWER SUPPLIES.
 - NURSE CALL HEADEND, PROVIDE 1 - 120V DEDICATED CIRCUIT.
 - 12"X4" BASKET CABLE TRAY FOR COMMUNICATIONS AND BACKBONE CABLING ONLY.
 - 12" WIDE LADDER RACK ABOVE COMMUNICATION RACK.
 - PROVIDE FIRE STOP MODULES AT RATED WALLS FOR ALL TECHNOLOGY CABLING. ALLOW FOR 30% GROWTH SPARE CAPACITY. STI EZZPATH OR HILTI SPEEDPATH ARE ACCEPTABLE MANUFACTURERS.

DATA AND COMMUNICATIONS SYSTEM - NEIGHBORHOOD A SOUTH



DRAWING INFORMATION		BOWLING GREEN VETERANS CENTER		DRAWING NO.												
AME FILE NO.	CDG project no.	DATA COMMUNICATIONS FLOOR PLAN		T1103												
DRAWING DATE	08/20/21	ACCOUNT NO.	COMMONWEALTH OF KENTUCKY FINANCE AND ADMINISTRATION CABINET DEPARTMENT FOR FACILITIES AND SUPPORT SERVICES DIVISION OF ENGINEERING AND CONTRACT ADMINISTRATION FRANKFORT, KENTUCKY	AS BUILT DATE												
DRAWN BY	Author	 		DECA LOG #												
CHECKED BY	Checker	<small>2405 Herndonburg Rd. Lexington, KY 40504 (859) 224-1351 www.orcutt-winslow.com</small>		REVISION HISTORY OF THIS DRAWING												
PHASE	In Progress	<small>2025 n central ave., bowling green, ky 40302 mail@orcutt-winslow.com 602.257.1766 www.orcutt-winslow.com</small>		DATE												
RTA DATE		<table border="1"> <thead> <tr> <th>DESCRIPTION OF REVISIONS</th> <th>DATE</th> <th>DESCRIPTION OF REVISION</th> <th>DATE</th> </tr> </thead> <tbody> <tr> <td>1 ADDENDUM #1</td> <td>3/1/2022</td> <td></td> <td></td> </tr> <tr> <td>2 ASI 3R</td> <td>5/20/2024</td> <td></td> <td></td> </tr> </tbody> </table>		DESCRIPTION OF REVISIONS	DATE	DESCRIPTION OF REVISION	DATE	1 ADDENDUM #1	3/1/2022			2 ASI 3R	5/20/2024			
DESCRIPTION OF REVISIONS	DATE	DESCRIPTION OF REVISION	DATE													
1 ADDENDUM #1	3/1/2022															
2 ASI 3R	5/20/2024															